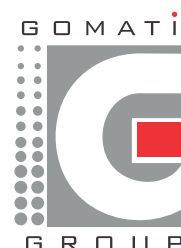


ARCHITECTS:  
**SATYAKANTI & ASSOCIATES**  
 ARCHITECTURE & INTERIORS  
 49/50, Tulsi Manor, 80 Feet Road End,  
 R. T. Nagar, Bangalore - 560 032.  
 Ph: 2333 8345, Fax: 2333 0343  
 E-mail: satyakanti@yahoo.co.in

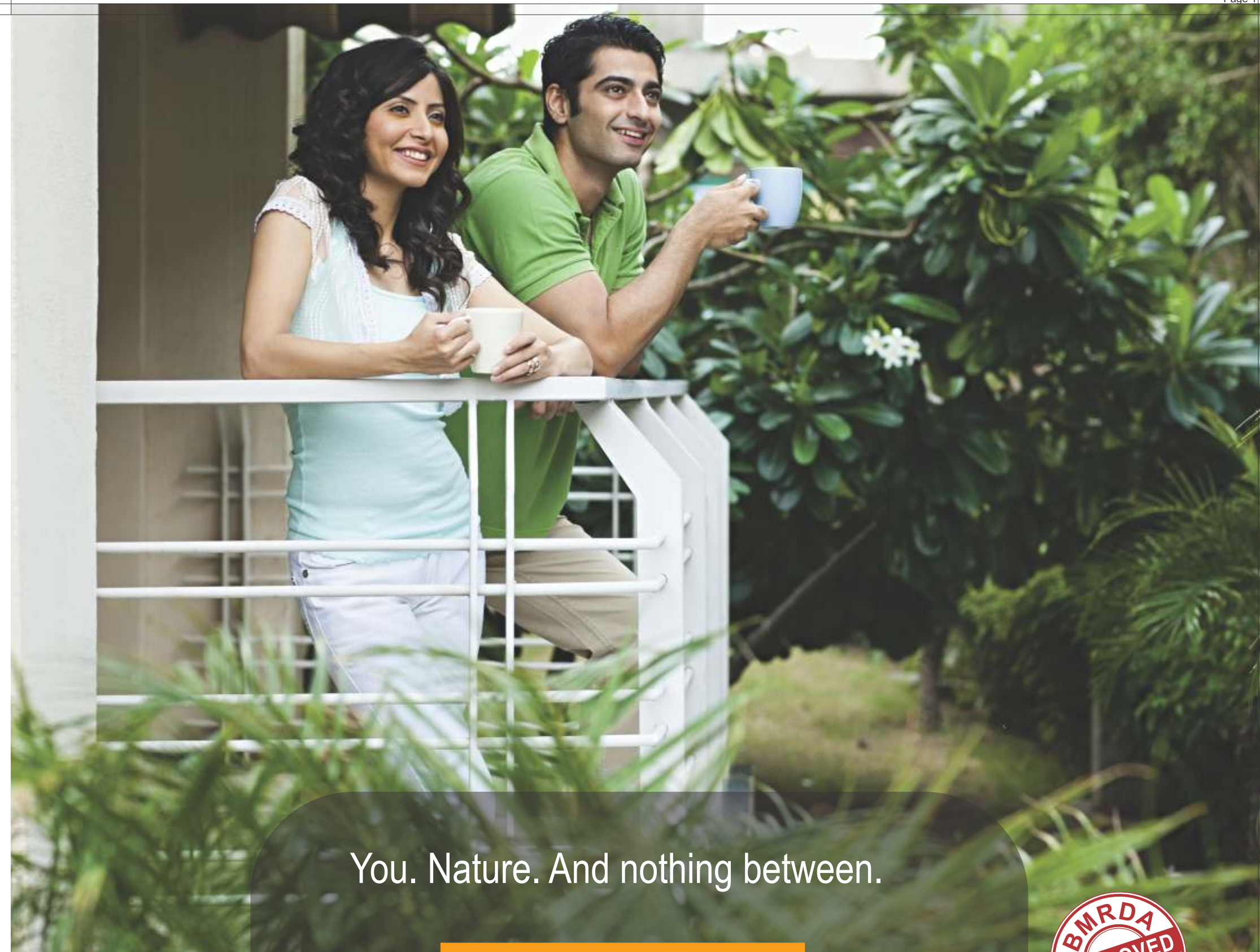


## Gomati Infratech

2607, 2nd Floor, 27th Main, 1st Sector, HSR Layout, Opp NIFT College, Bangalore - 560 102.  
 Email : gomatiiris@gmail.com | www.gomatiinfratech.com

Mobile: 98456 42757 / 98456 46425

Note: This brochure is purely conceptual and does not constitute a legal document. The architects and promoters reserve the right to change, delete or add any specification or elevation mentioned herein.



You. Nature. And nothing between.



Gomati **iris** 2 & 3 BHK APARTMENTS



## I believe.

I believe that life is all about feeling alive and living well.

I believe in open spaces and an open mind.

I believe in daydreams and sound sleep.

I believe happiness is not measured in square feet but in the quality of life.

I believe family and friends are special, but I also believe I need a few quiet moments by myself.

I believe my child should run with a free mind.

I believe life's necessities should be closeby.



Gomati **Iris**

I believe I have found the home I deserve.

Presenting Gomati Iris.  
Luxury made affordable.



Gomati Iris is an exclusive, secure and impeccably planned development near Electronic City. Inspired by you at its centre, Gomati Iris features the best design standards which give you the experience of luxury, quality and workmanship. Each apartment promises complete privacy and is designed to give you the freedom to grow, flourish and enjoy a lifestyle in an environment which spells class in every square foot. The elegant architectural design has wide windows and spacious balconies welcoming sunshine, breeze and a panoramic view all day long.



Gomati **Iris**





### For those who want more.

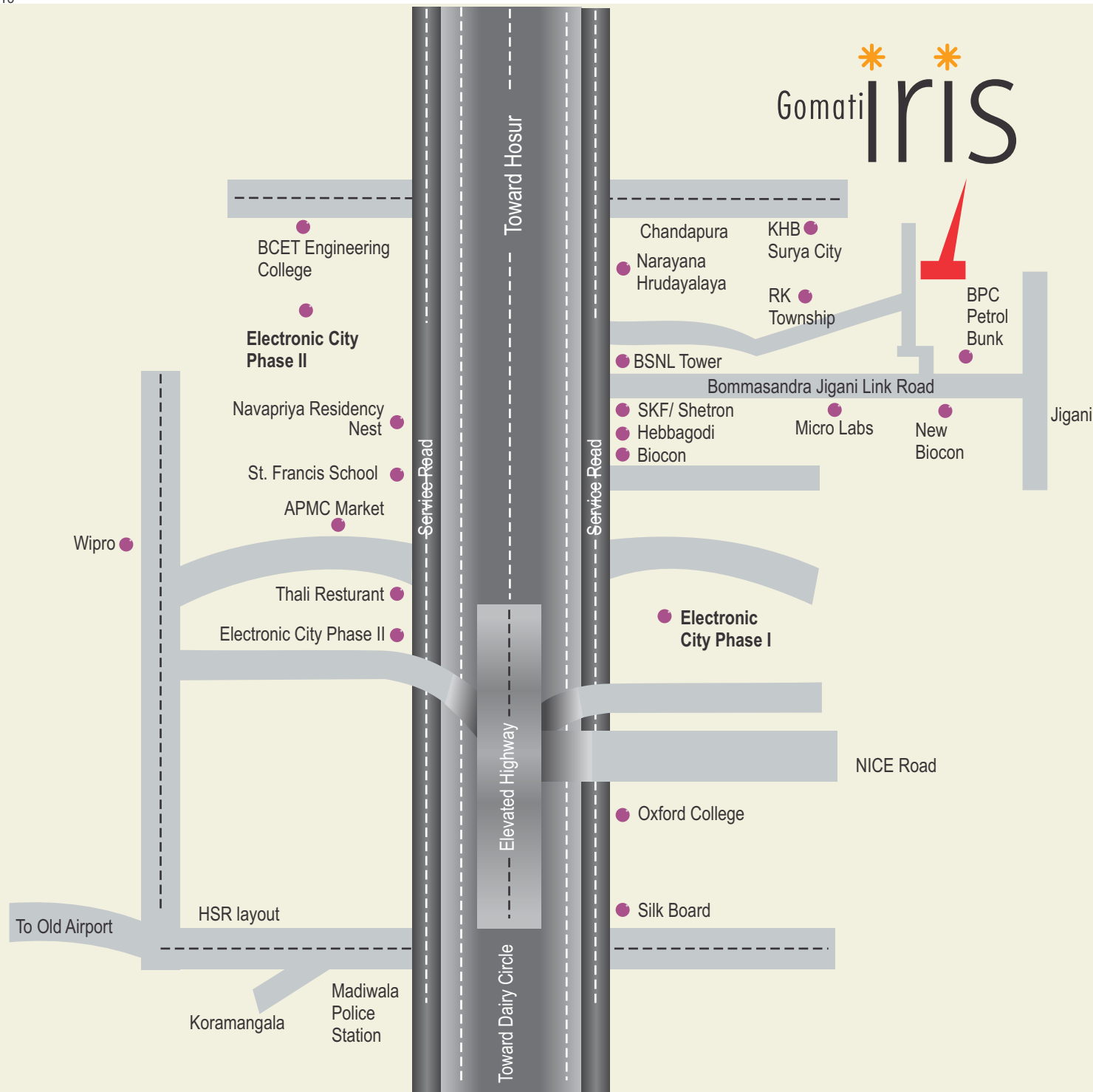
Gomati Iris comprises of 4 blocks of 186, 2BHK and 3BHK homes. The design concept is a unique approach to shape a premium living space and craft an exclusive lifestyle experience. Every Gomati Iris home is Vaastu compliant with plenty of natural light and ventilation.

Here we take pride in pampering you with homes that are spacious and beautiful while still holding true to the functional promise of convenience.



Modern housing meets green, open spaces.

Gomati **IRIS**



# Gomati Iris



Ideally located in Bangalore's future life-centre.

Close to the Jigani Link Road.

Near to the prestigious KHB Surya City spread over almost 754 acres.

Future Development Zone of the city.

Located in close proximity of Hosur Road and Electronic City.

Established road networks connect you conveniently to all parts of the city.

Located in close proximity of leading corporates and major business houses.

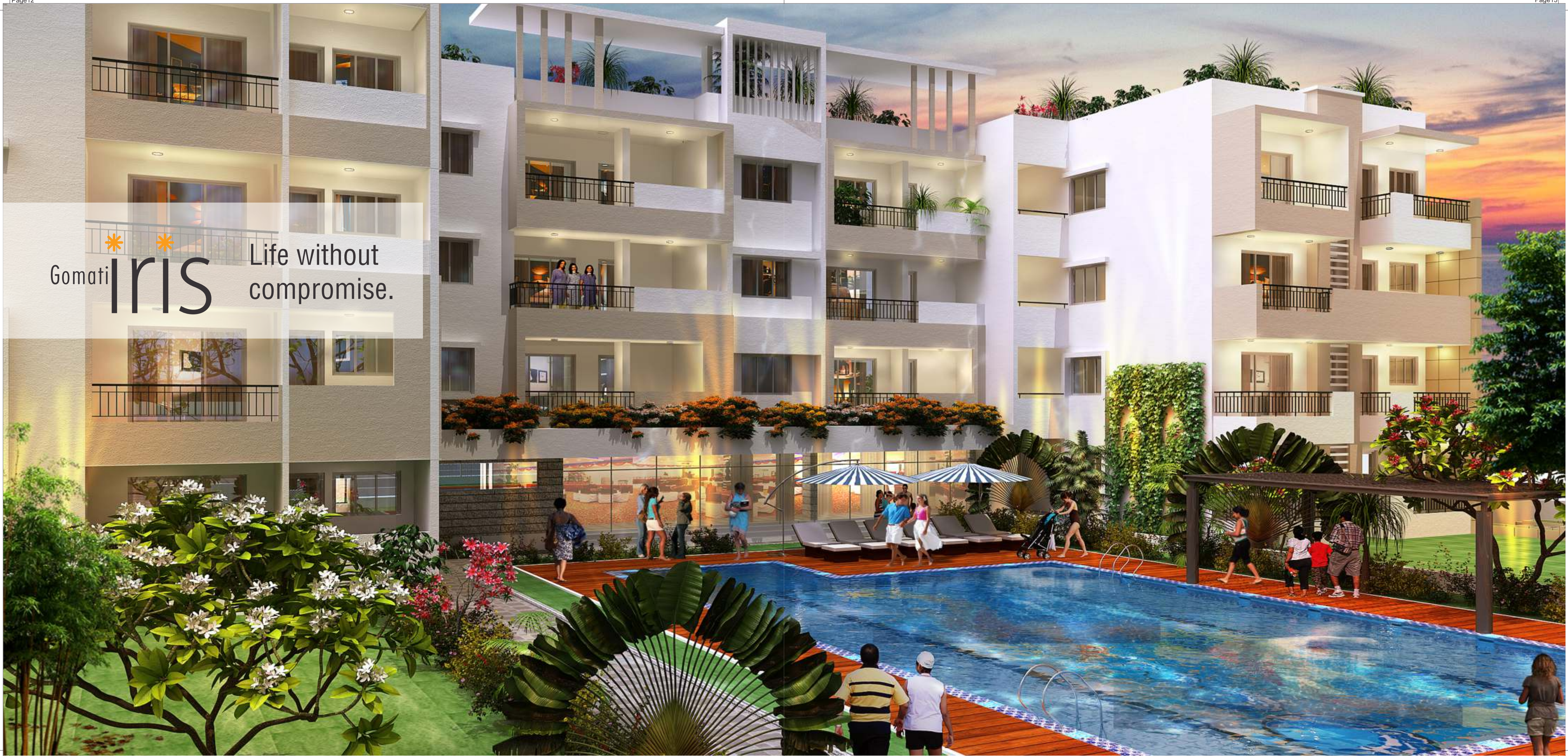
Prominent educational institutions and health care options are in the vicinity.

Easy approach to Bannerghatta Road.

Close to all public facilities.



Gomati **IRIS** Life without compromise.





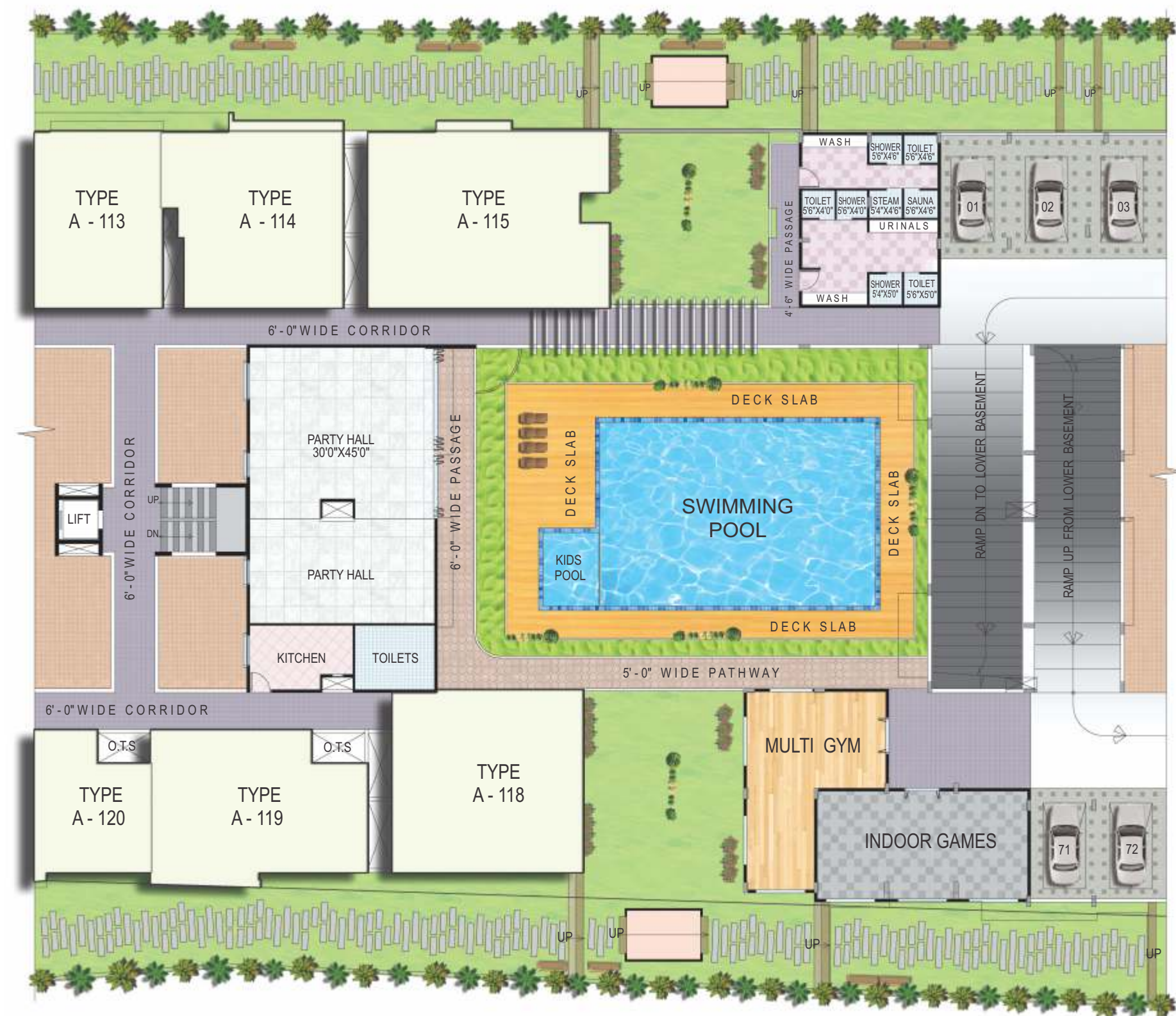
## Quality of life meets quality of living.

Gomati Iris is what modern living is all about, with all the amenities and features you have always thought about.

- ◆ Swimming pool with kids' pool
- ◆ Steam and sauna
- ◆ Multi purpose hall with kitchen and wash rooms
- ◆ Well equipped gym
- ◆ Indoor games
- ◆ Lush landscaping



## AMENITIES MASTER PLAN





Master plan for the modern life.



There is more to Gomati Iris besides secure living in a well-designed and tranquil community. Residential areas have been designed around open spaces. Well-manicured lawns and landscaped parks are highlights. Features like rainwater harvesting help maintain the eco-friendly nature of the community.

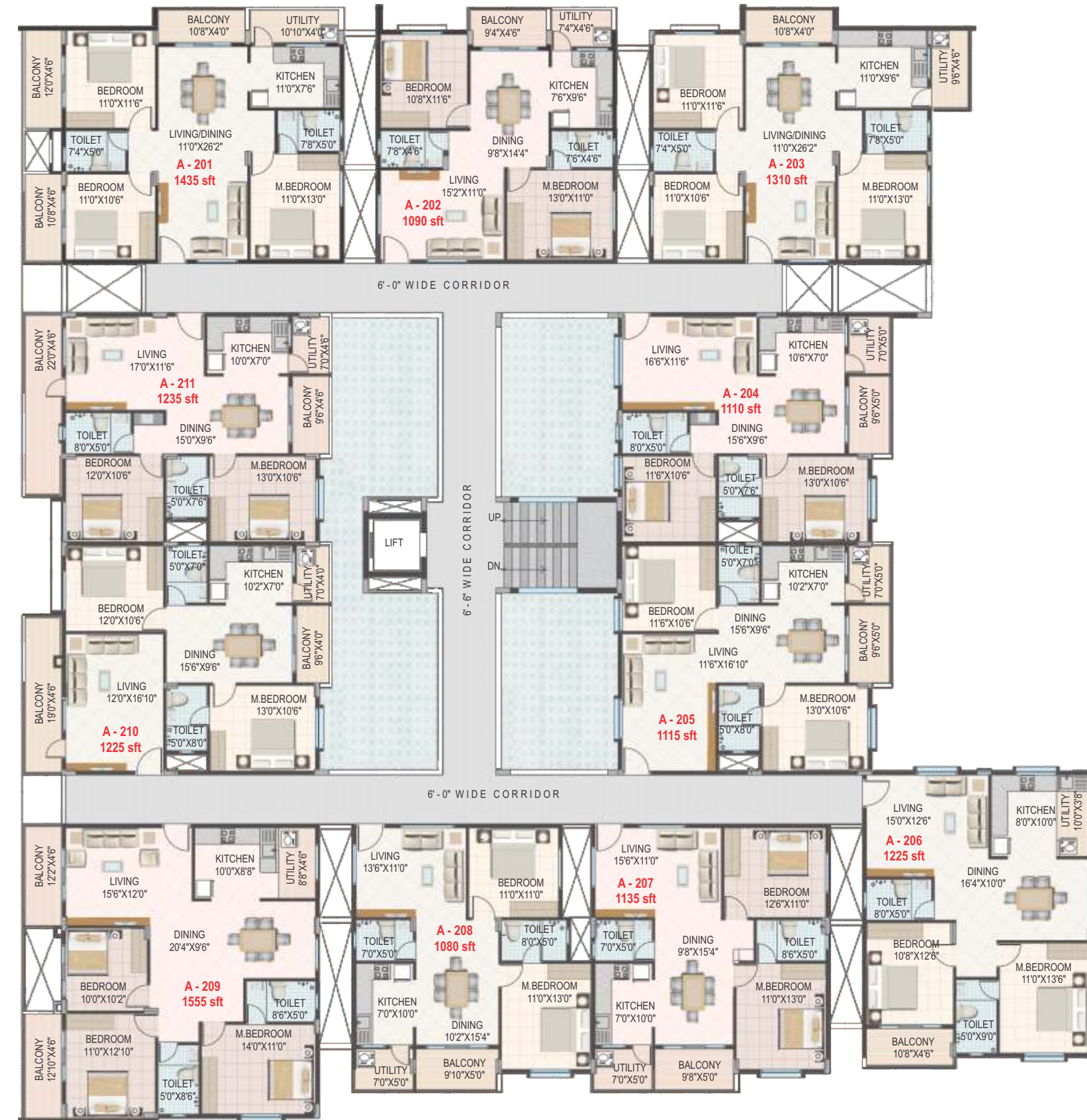
NORTH BLOCK

SOUTH BLOCK



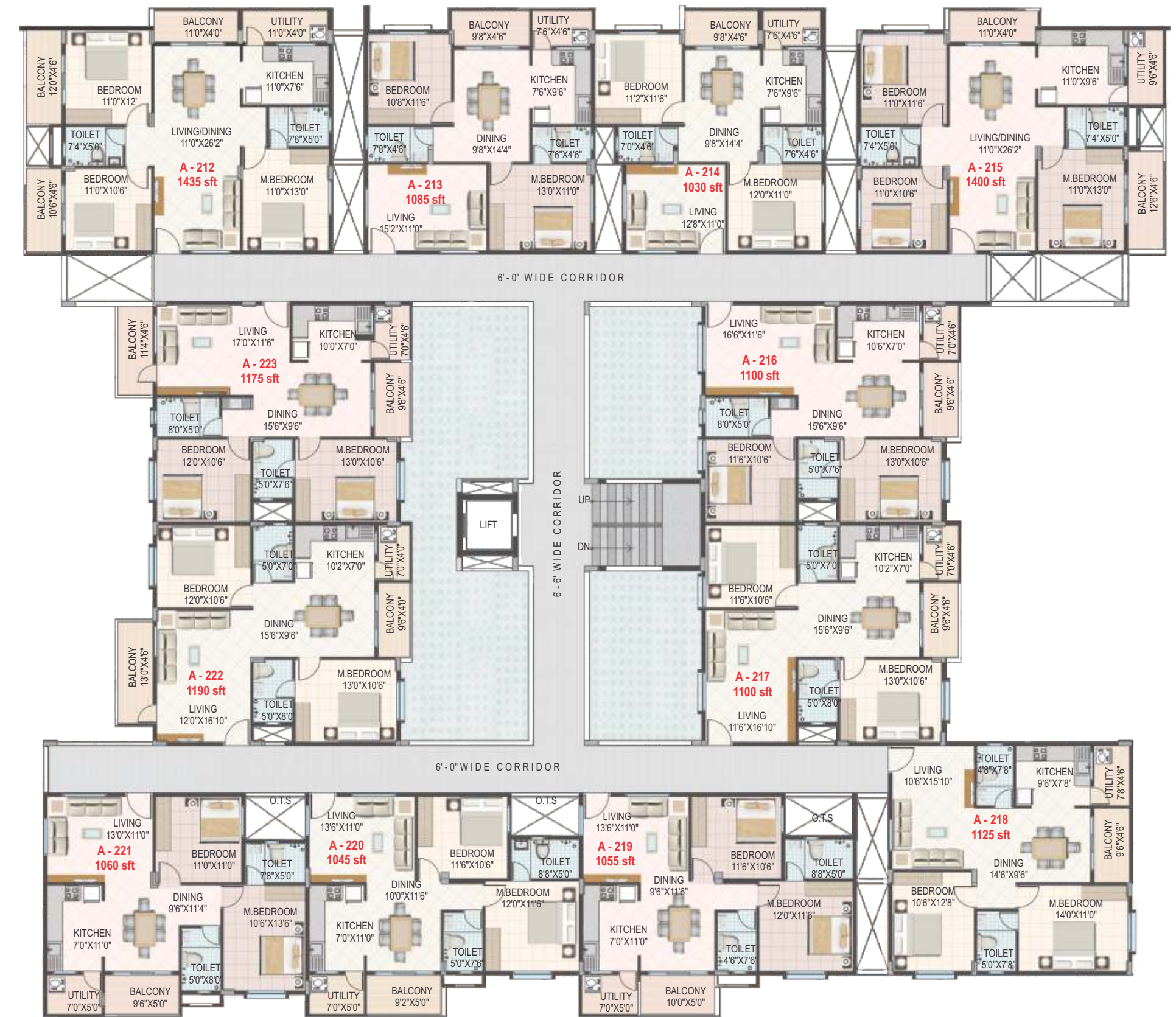
# NORTH BLOCK - A

## SECOND FLOOR PLAN



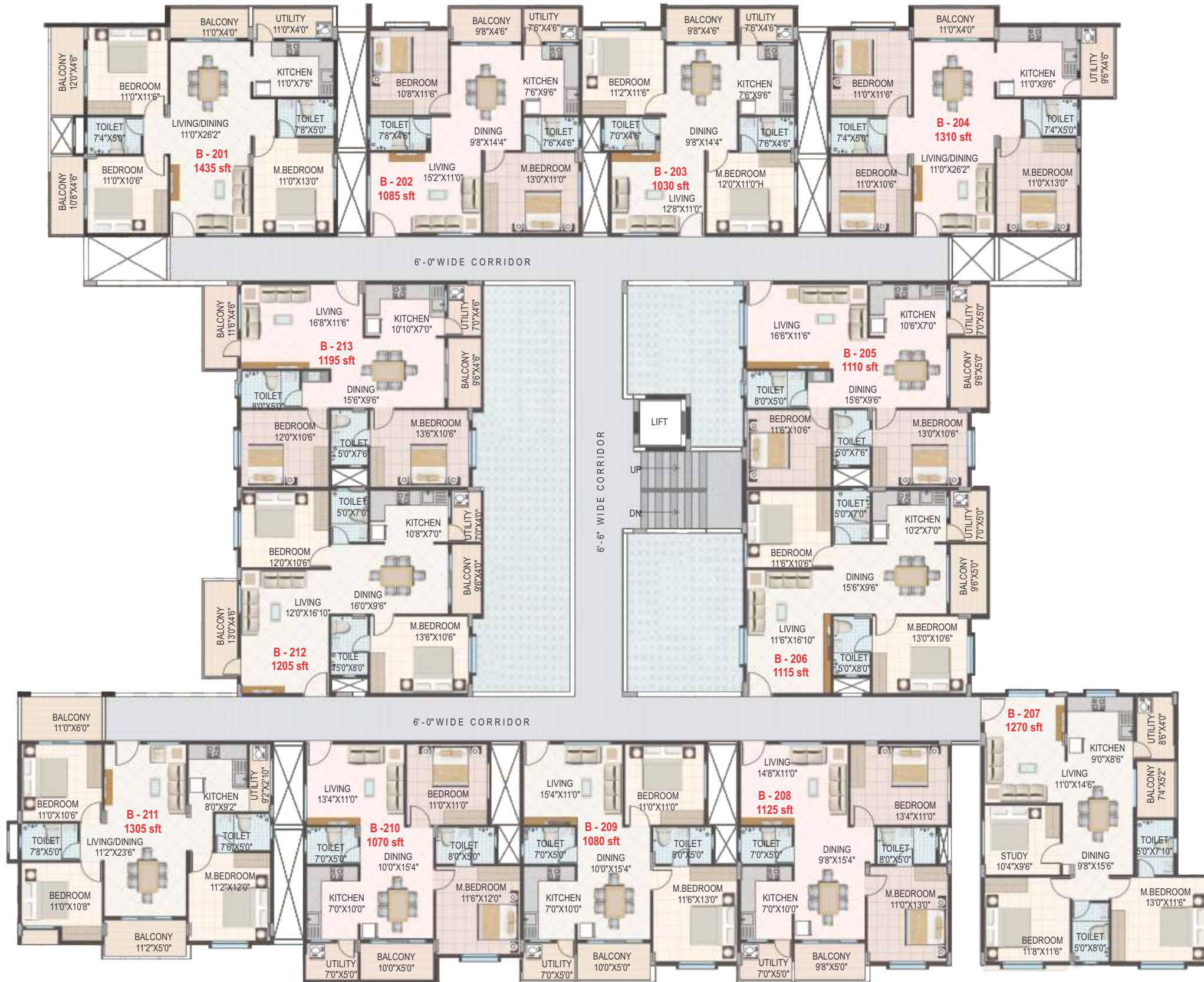
# NORTH BLOCK - A

## SECOND FLOOR PLAN



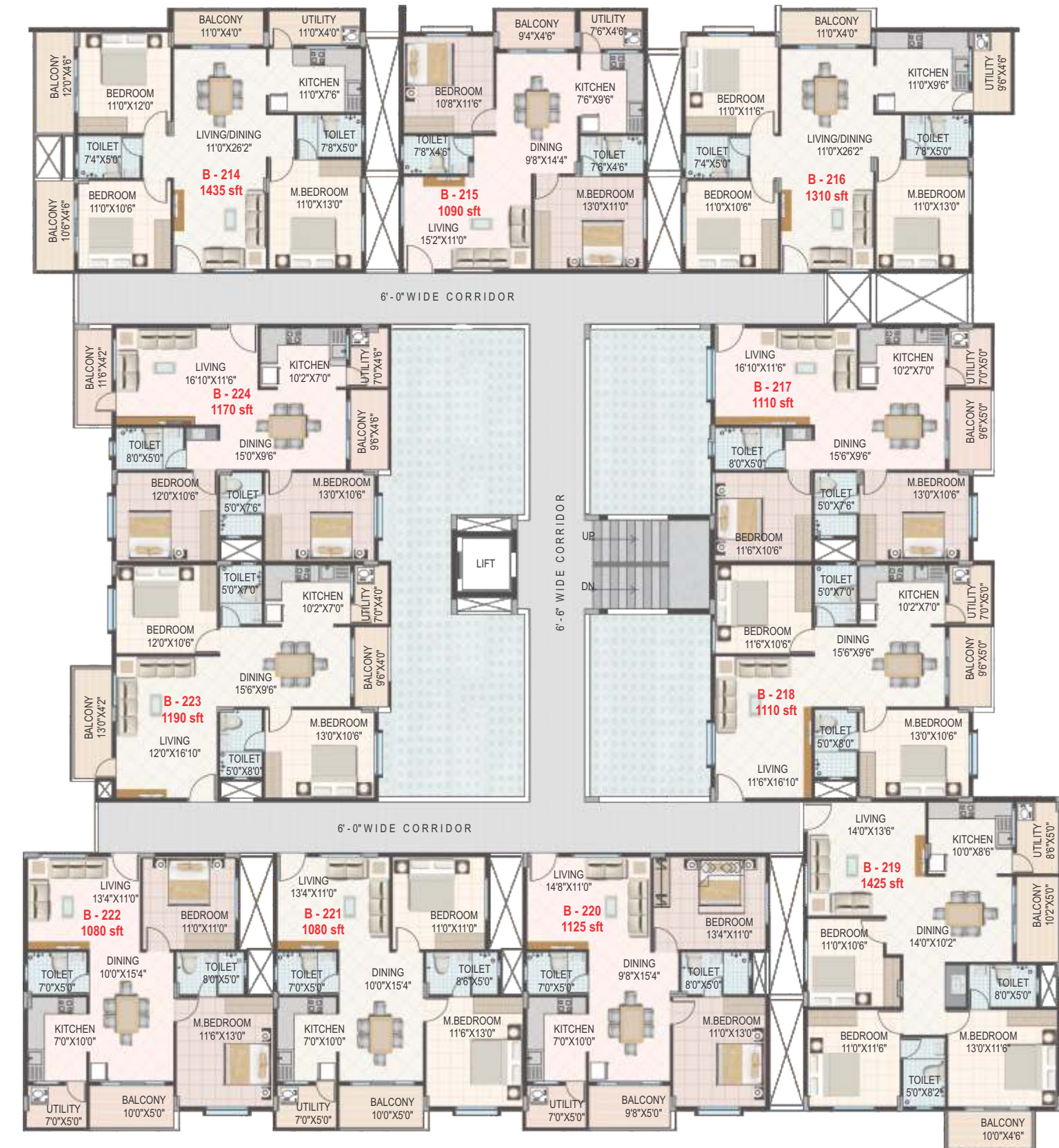
# SOUTH BLOCK - B

## SECOND FLOOR PLAN



# SOUTH BLOCK - B

## SECOND FLOOR PLAN



# Specifications



## Building structure

RCC framed structure.



## Windows

Aluminium sliding windows with safety grill.



## Doors:

Main door : Teak wood frame with elegantly finished OST shutters.

Other doors : Hard wood frames with flush shutters.



## Electricals

Fire resistant concealed wiring.

Adequate points for lights, fans & other plugs in bedrooms, toilets and kitchen with modular switches of reputed brand.

Provision for exhaust fans & geysers points in toilets and kitchen. Plug points for chimney, water purifier, refrigerator & other kitchen appliances.

TV points in living & master bedroom.

Telephone points in living & master bedroom.

Power back up for all lighting points, fans & TV points in each flat.



## Water

24 hours water supply.



## Toilets

CP fittings of Jaquar or equivalent.

Provision for cold & hot water.

Porcelain sanitary wares of reputed brand.



## Flooring

Living, bedrooms, dining area & kitchen - Vitrified tiles.

Toilets - Anti skid tiles flooring with ceramic tiles dado upto 7' height.



## Kitchen

Granite cooking platform with stainless steel sink. Dado upto 2' height.

CP fittings of ISI mark.



## External and internal paint

External wall:

1 coat of primer & 2 coats of Apex paint.

All internal walls:

OBD with 2 coats of wall putty.



## Lobby & lifts

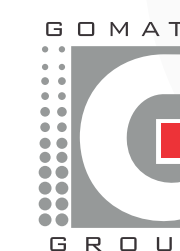
Entrance lobby finished with granite flooring.

4 automatic lifts of reputed make and 8 passenger capacity.



G O M A T I

We believe in quality.



**Gomati Infratech**

Transparency in our deals, our customer centric approach and timely delivery of projects stands testimony for our ever increasing customer base.

G R O U P